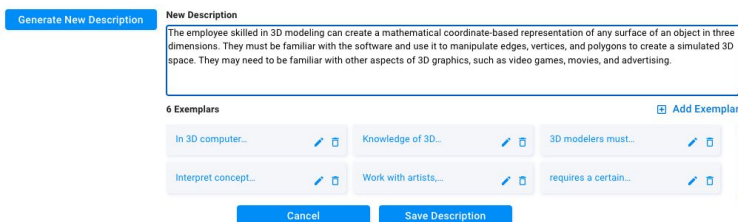


You may not be ready for the Empath Skills Intelligence platform, but you want to **jump start your skills transformation journey**. That journey begins with establishing a standard organizational skills language. Perhaps you're looking for a tool to modernize how you edit and manage skills instead of using spreadsheets. Every organization needs something more efficient and sustainable as skills evolve and your organization grows.

To properly manage talent today, organizations need to track skills and proficiency levels for each employee. If you don't have a defined skills library, we make it easy for you. We've identified the most important organizational skills through the **Empath Proficiency Library (EPL)** which includes the top 350 skills, and associated levels, to get you started.

Saving you years of effort



Empath also understands that writing skill and level descriptions is critical yet extremely time-consuming. Empath's **Skills Taxonomy Manager (STM)** not only manages your skills library but also uses AI to write skill and proficiency level descriptions based on job postings and other content. **No human intervention required.** With STM, if you have your own skills taxonomy, you can upload directly into the tool. Now as roles change and grow, you can easily add skills that are unique to the organization. **Empath saves you time and money.**

STM will help your organization

- ✓ Define and develop skills and proficiency levels
- ✓ Create and manage job role requirements (job skill architectures)
- ✓ Tag courses with skills and proficiency levels
- ✓ Build crosswalks between taxonomies



- Skills Inventory (snapshot)
- Skills Intelligence Platform

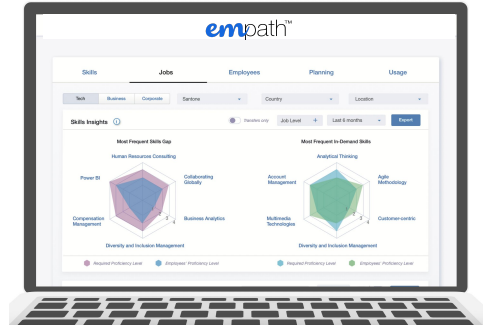
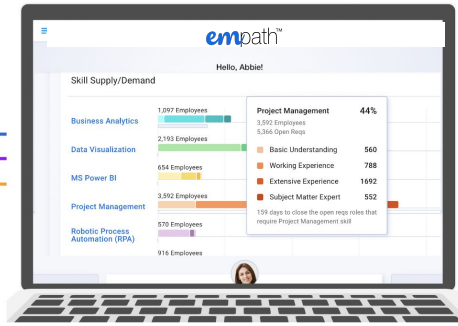
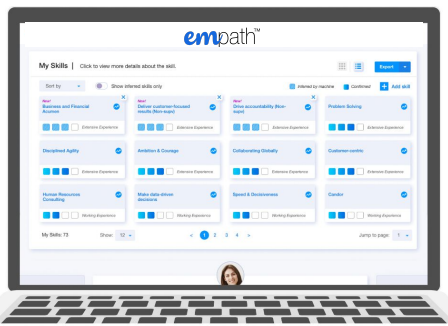
Empath Solutions

Skills Inventory (company-wide snapshot)

Your skills journey begins with knowing and understanding what skills your employees have. Empath makes it easy for you to get a snapshot, or complete and accurate skills inventory, for every employee (or employee subset), within ten weeks. You can eliminate years of work and the expense of trying to do this on your own. We recommend periodic updates.

Skills Intelligence Platform

When you are ready, Empath offers its Skills Intelligence Platform. Providing more than a snapshot, this company-wide inventory allows you to make data-driven decisions about your workforce. Empath provides you with data that helps your organization with planning for today as well as future business needs. The Platform is system agnostic and can easily integrate with your LMS and other HR systems. *Empath becomes the bridge connecting your talent ecosystem.*



Every employee knows their skills and what they need to do to reskill/upskill for current and future roles

Matching employee skills to open requisitions

Identifying organizational skills gaps

Know the skills of every employee